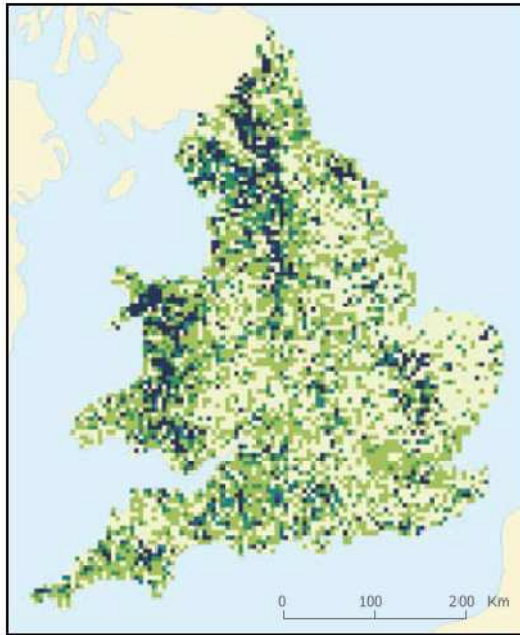








Carbon and water



Right: rates of change calculated from the change over the different sampling intervals (1994–2003)
Rate of change (g/kg/yr)

					
< -2.0	-2.0 to -1.5	-1.5 to -1.0	-1.0 to -0.5	-0.5 to 0.0	> 0.0

Loss of soil organic carbon content 1978-2003



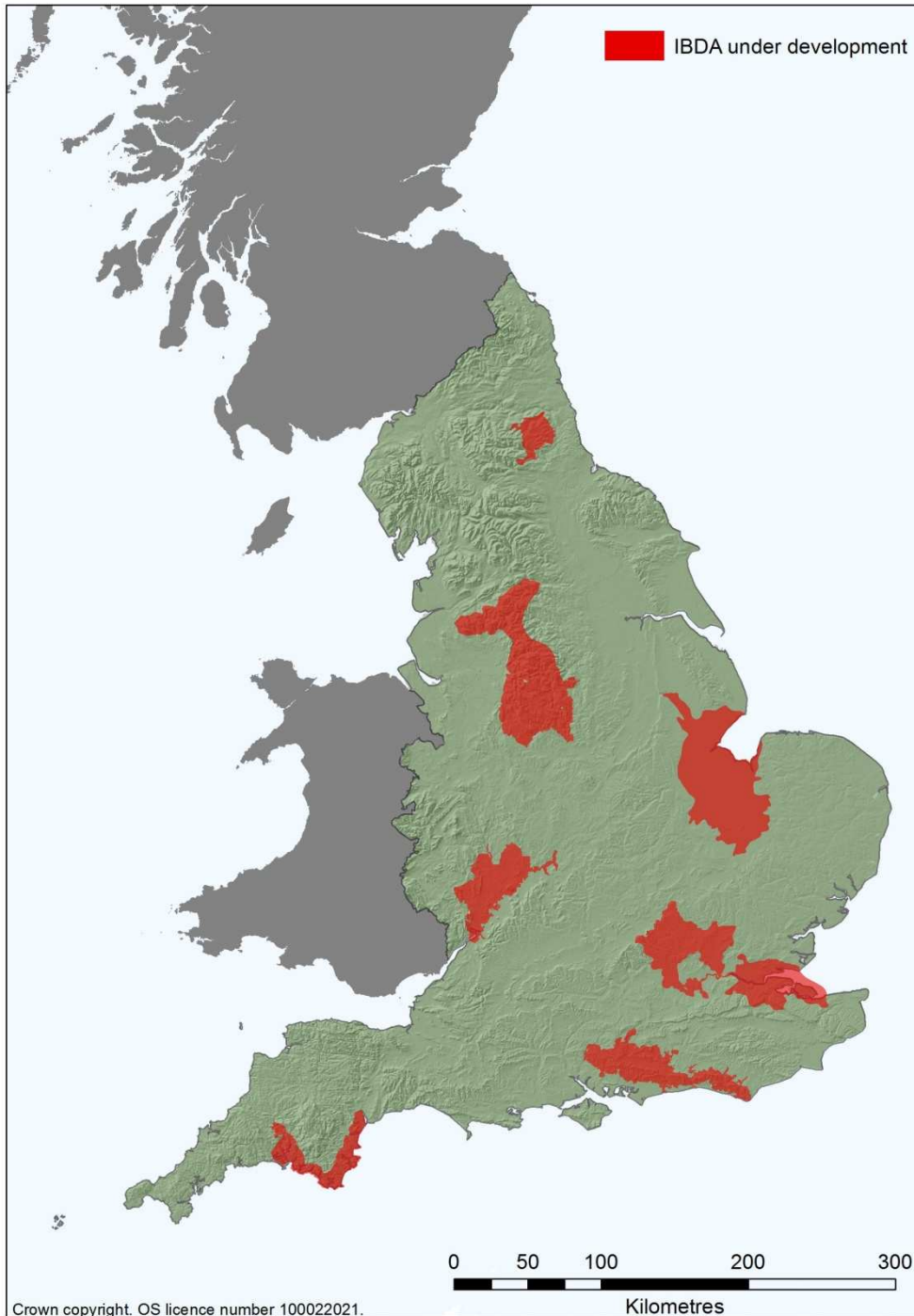
- **Control water run-off**
- **Store carbon**
- **Restore rivers**
- **Improve moorland condition**



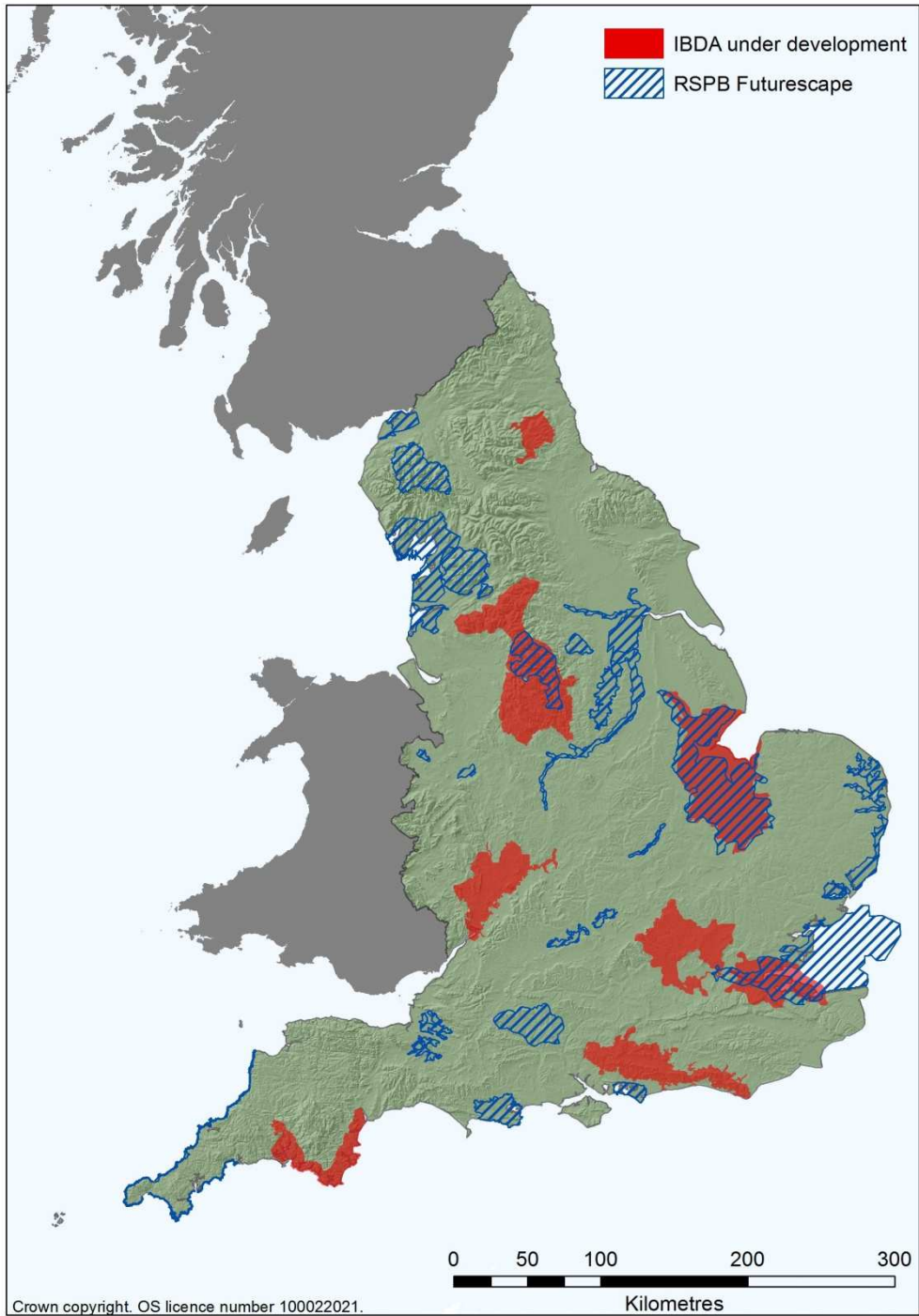
© MURRY SANDERS

UK BAP – targets

- 135,000ha more native woodland
- 15,250ha more lowland heathland – linking fragments
- 18,000ha cereal field margins
- 9,700ha more lowland calcareous grassland
- 3,200ha more lowland meadow
- 3,000ha more reedbed
- 2,000ha more fens
- 3,600ha more intertidal saltmarsh and mudflats

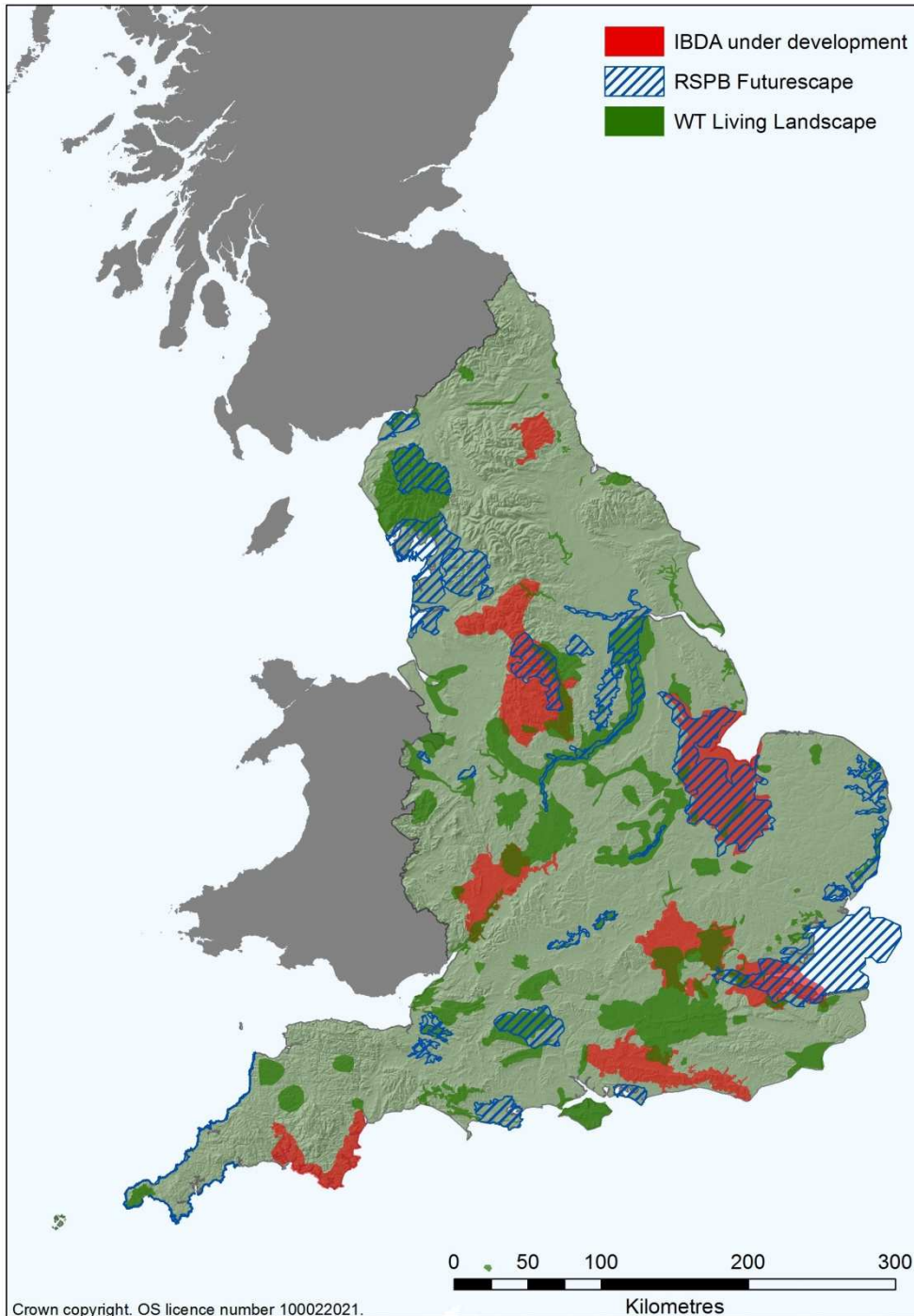


Integrated Biodiversity Delivery Areas



Integrated Biodiversity Delivery Areas

Futurescapes



Integrated Biodiversity
Delivery Areas

Futurescapes

Living Landscapes